

welcome



the gibson hotel at the point village

Music lovers, art junkies, food fanatics... whatever your passion it's right on your doorstep. From vibrant bars, restaurants, theatres and galleries to our music mecca – The 3 Arena, you can immerse yourself in Dublin's culture in just a

few short steps. Just 11km from Dublin Airport, we're also close to all the major transport links making it so easy to tune into what's happening in this vibrant city - a map of where we are, is on the inside back cover of this brochure.



access /_{01.}/The 3 Arena/_{02.}/Aviva Stadium/_{03.}/Croke Park
/_{04.}/Convention Centre Dublin/_{05.}/Port Tunnel/_{06.}/Dublin Airport
/_{07.}/Bord Gáis Energy Theatre/_{08.}/Grafton St/_{09.}/O'Connell St
/_{10.}/Stephens Green/_{11.}/IFSC

01. The 3 Arena - a few steps
02. Aviva Stadium - 0.8km
03. Croke Park - 3.0km
04. Convention Centre Dublin - 0.3km

05. Port Tunnel - 0.3km
06. Dublin Airport - 11.0km
07. Bord Gáis Energy Theatre - 0.5km
08. Grafton Street - 1.2km

09. O'Connell Street - 1.0km
10. Stephens Green - 1.2km
11. IFSC - 0.6km



the gibson hotel/superior rooms

our rooms include:

luxurious respa beds/powerful rain shower/air-con/free
100MB high speed WiFi and broadband/flat screen tv/tea
and coffee making facilities/iron and board/power hair dryer/
workstation and laptop safe



Calming and tranquil – each of our beautifully appointed superior bedrooms have been designed with perfect relaxation in mind.

With carefully chosen soothing colours and textures, plus a host of luxurious extras, we've created a haven from the hustle and bustle outside.



the gibson hotel/executive rooms



Fancy something a bit more spacious? Choose from an Executive Room with a balcony overlooking The Point Village Square/Dublin Port or a Junior Suite with some space to kick back and take it at your own pace. All suites have king size beds.

With South or West facing aspects each room has a private terrace or balcony. Feel right at home with your own living space. Stretch out and watch a movie or play air guitar to your favourite tunes.



the gibson hotel/penthouse - the gibson suite

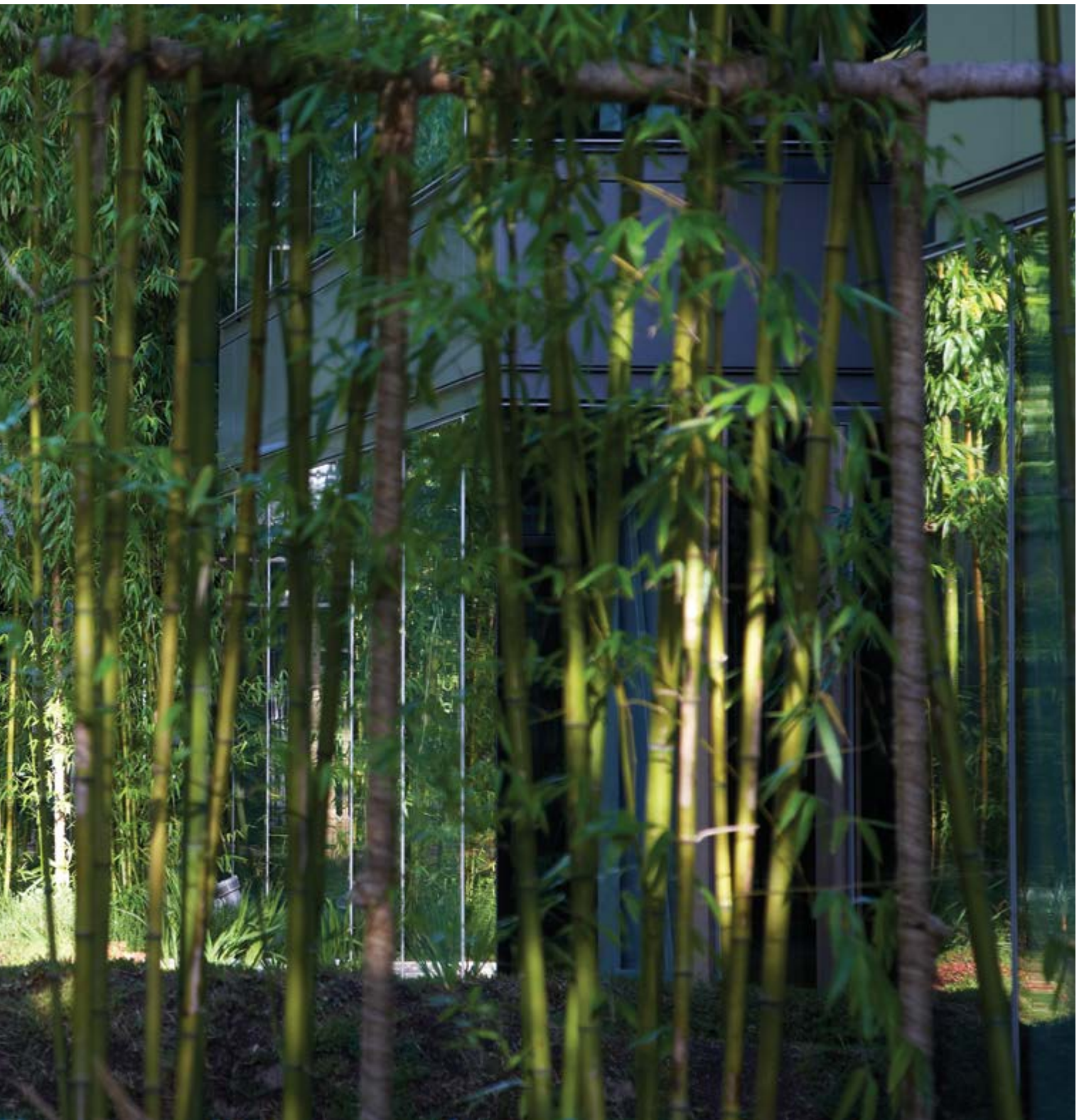


What's not to say? Supreme luxury, the most amazing bed in town, a state of the art sound system... our **gibson suite** is totally rock and roll. This chic, luxury suite can sleep two people and offers unrivalled views over the city from its private terraced balcony.

Have your own private party in the living space or chill out on the balcony with a bottle of something fizzy and a few of the latest tunes. With its incredible rooftop location overlooking The 3 Arena, we promise you something truly special. Go on, you're worth it...



the gibson hotel/internal courtyard



One of our truly best kept secrets is our hidden outdoor spaces. They have been created to excite, surprise and delight, carefully designed with towering bamboos and calming water features.

Views of the inner courtyards will take your breath away, allowing you to unwind and let your mind take you where it wants to be – the perfect vista to help you wind down after a hectic day.

No other hotel in the centre of Dublin has these 'green outdoor spaces', where guests can sit outside and enjoy the calm, Zen atmosphere while still being right in the heart of a busy, city centre location. Go on, explore...



the gibson hotel/hemidemisemiquaver bar

The Hemi's a great place to get away from the madness of the city and just chill out. Located right up on the third floor, the view from the terrace is pretty special and the buzz in the bar is even better.



hemidemisemiquaver bar:

dirty martini/daiquiri/mojito/bellini/pinot grigio/bordeaux/
prosecco/single malt/oak aged/nibbles/eau de vie/
on the rocks/highball/whiskey sour/gibson cocktail

Meeting up before the show? Relax and watch the world go by on the terrace or go totally rock and roll with your own private room overlooking The Point Village Square. Just tell us what you want and we'll make it happen.

Our menu has a little bit of something for everyone: from Pan Asian to classic European. Believe us, this is the ultimate comfort food – quick, nutritious and packed full of flavour. There's a calorie guide so if you want to be good, we'll make sure you pick the right dish.

We've got a pretty mean cocktail list to choose from too. Come down on Sunday and try our lazy brunch. It's the perfect way to ease you into a brand new week.



the gibson hotel/coda eatery

coda: good food/no fuss/great puds/chilled wines/
catch-up with friends/quick snack/dinner for
1/2/3/4/5/6/7/8/10/20/30...



Good food doesn't have to be fussy, at Coda Eatery we let the ingredients speak for themselves. We pick what's in season, sourced locally where we can, and create wholesome dishes that taste great - it's as simple as that.

Loved for its laid back look and feel, Coda Eatery is perfect for a catch-up with friends before a concert, or a bite of supper after a business meeting.

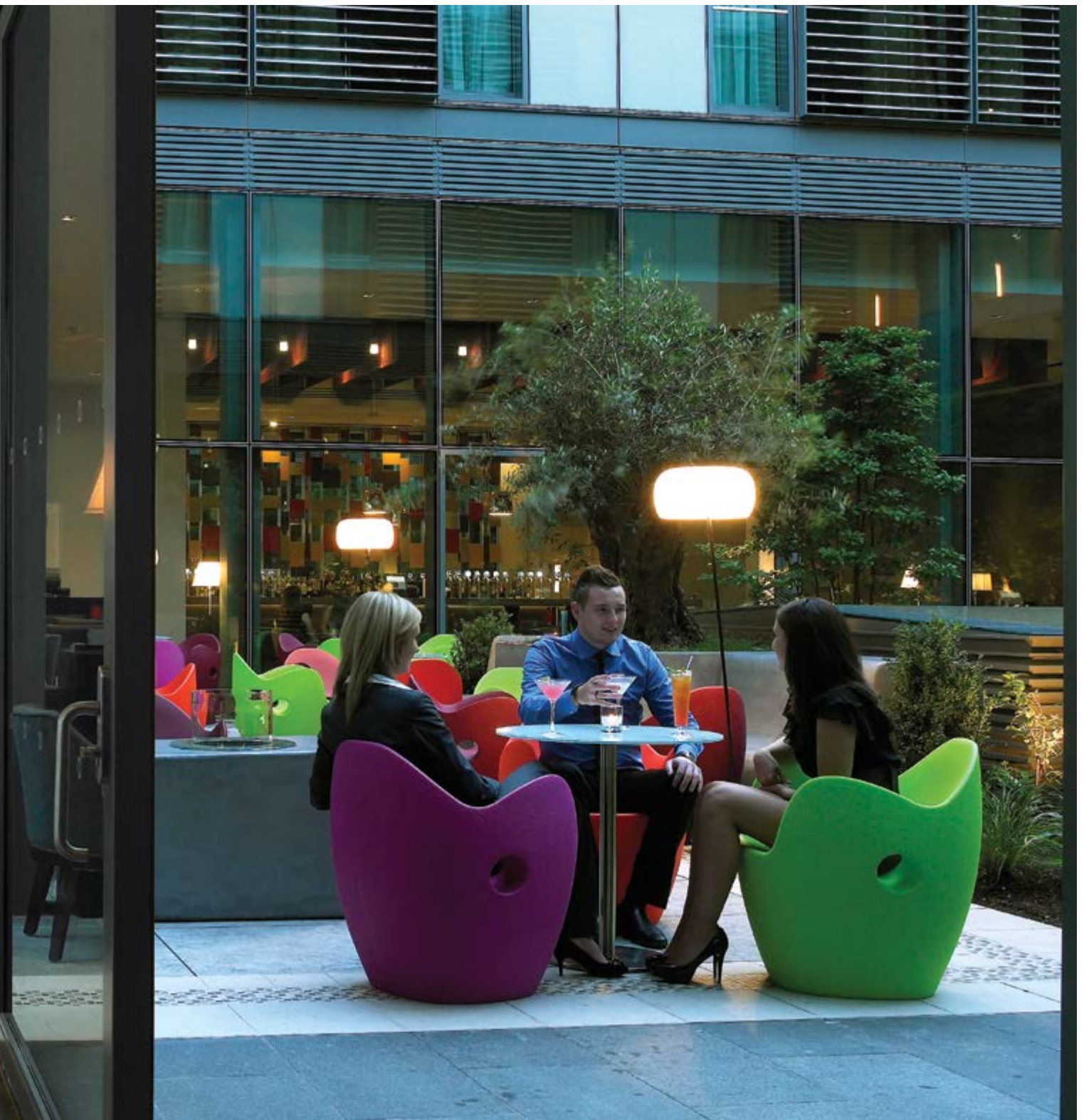
Sounds good, doesn't it? We've got a straightforward list of great wines to choose from too. Just ask, we'd be happy to help you choose from our walk in wine wall.



the gibson hotel/outdoor spaces

Internal courtyard

Right in the heart of the hotel you'll find our unique courtyard. This stunning space, with its 100 year old olive tree, funky chairs and calming water features is the perfect setting for casual dining. It has become popular for summer parties and BBQ's.



The 3 Arena Terrace

Our outdoor terrace overlooking The 3 Arena offers great views for casual dining and is already firmly on the radar of those in the know. This quirky space really is the real deal when it comes to premium level seating – perfect for all you music junkies.

Private Terrace - 5th Floor

This space really is the ultimate location. Perfect for an overnight event, eight of our most exclusive bedrooms open onto this private terraced area on the 5th floor. Stunning views of the city, a beautiful landscaped area and staff on hand to serve cocktails.

We reckon our private terrace area will give your event that extra edge and keep them talking for years to come.

Several of the outdoor spaces can be reserved for private gatherings – just ask.



the gibson hotel/conference area

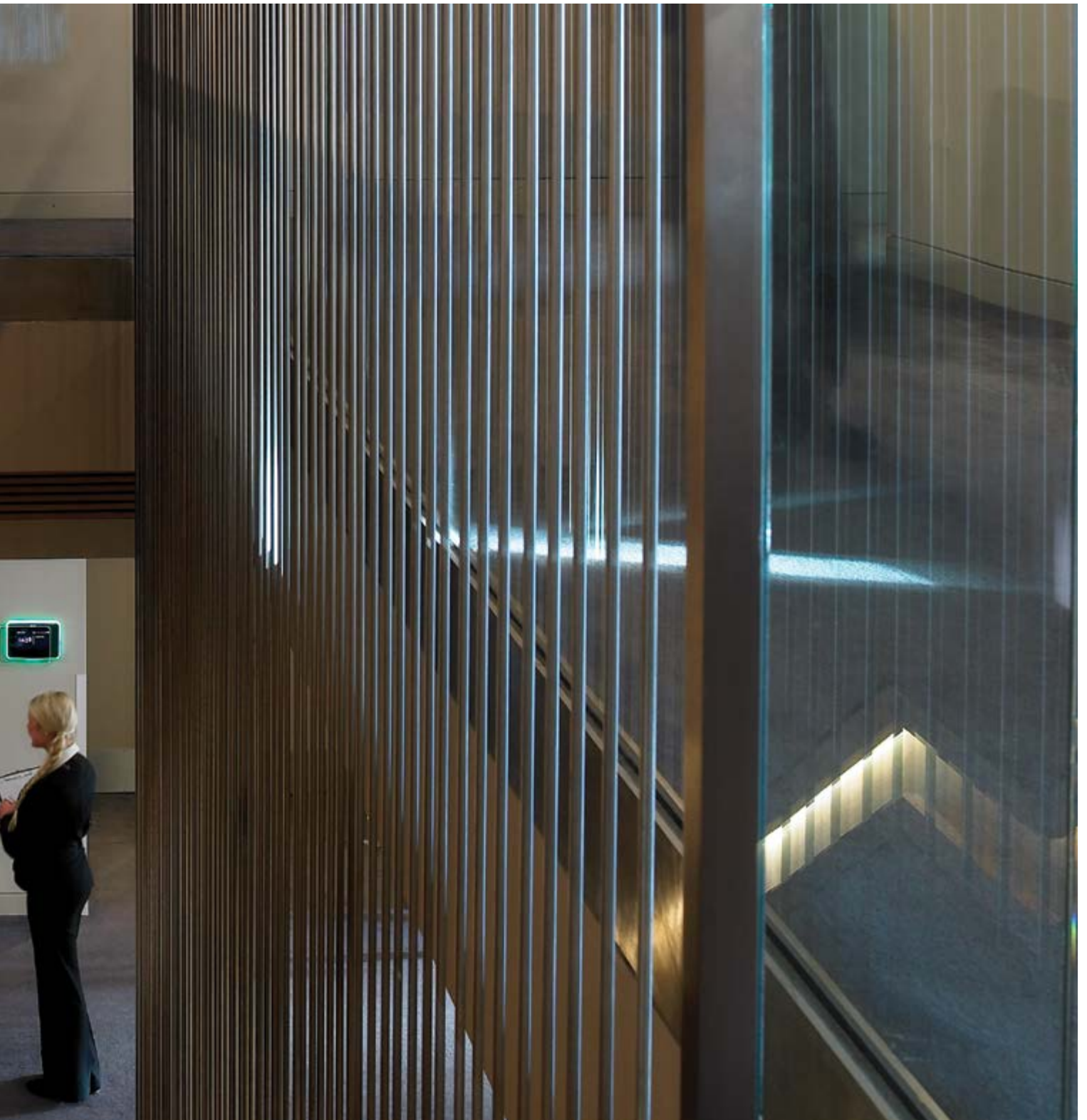


We go that extra mile to make your business our business with our dedicated Conference Area. Covering two floors, the Conference Area has nine state of the art meeting rooms accommodating up to 300 delegates.

We've got all you would expect from a conference facility – free 100MB high speed Wifi, the latest AV technology and the rest. We've also got a team of experienced staff to make sure you get what you want, when you want it.

But it's not just about cleverly designed rooms and state of the art facilities the views are pretty spectacular too. Point Village Square, Dublin Port, the sweep of the tide towards Dublin Bay, this amazing panorama makes business that little bit more pleasurable.





facilities at a glance:

natural daylight/free 100MB high speed WiFi and broadband/
air-con/secure storage facilities/motorised screen/LCD
projector/DVD player/touch screen controls/blackout facilities





So you've been asked to organise the next office knees up... or maybe you're planning a surprise party for your best friend. You're looking for a venue that screams effortless style. Not just the usual 'same old, same old' but somewhere a little different that makes everyone feel a bit special.

Why not give us a call or come down and we'll show you around. You can talk to one of our events team and they'll give you the inside track on everything to make it an event to remember. We can take the hassle out of event planning with a range of different bespoke packages.

We reckon we've got just what you're looking for to get the party started.



the gibson hotel/capacity

room/layout	banquet	boardroom	u shape	theatre	cabaret
stratocaster	200	n/a	60	300	120
alhambra	50	22	27	70	30
broadcaster	10	12	n/a	n/a	n/a
rickenbacker	n/a	16	n/a	25	n/a
cordoba	50	28	30	80	30